

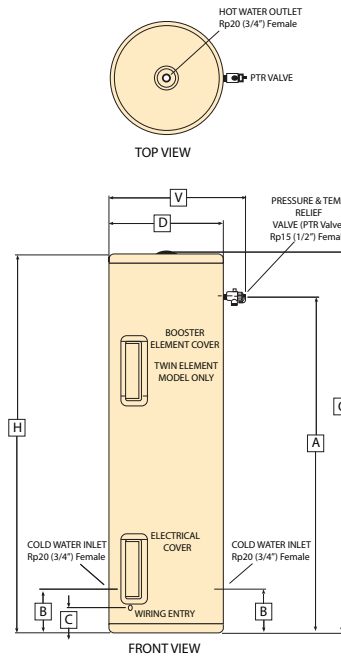
AQUAMAX STAINLESS STEEL ELECTRIC WATER HEATER SPECIFICATIONS



AquaMAX sets a new benchmark in electric water heating

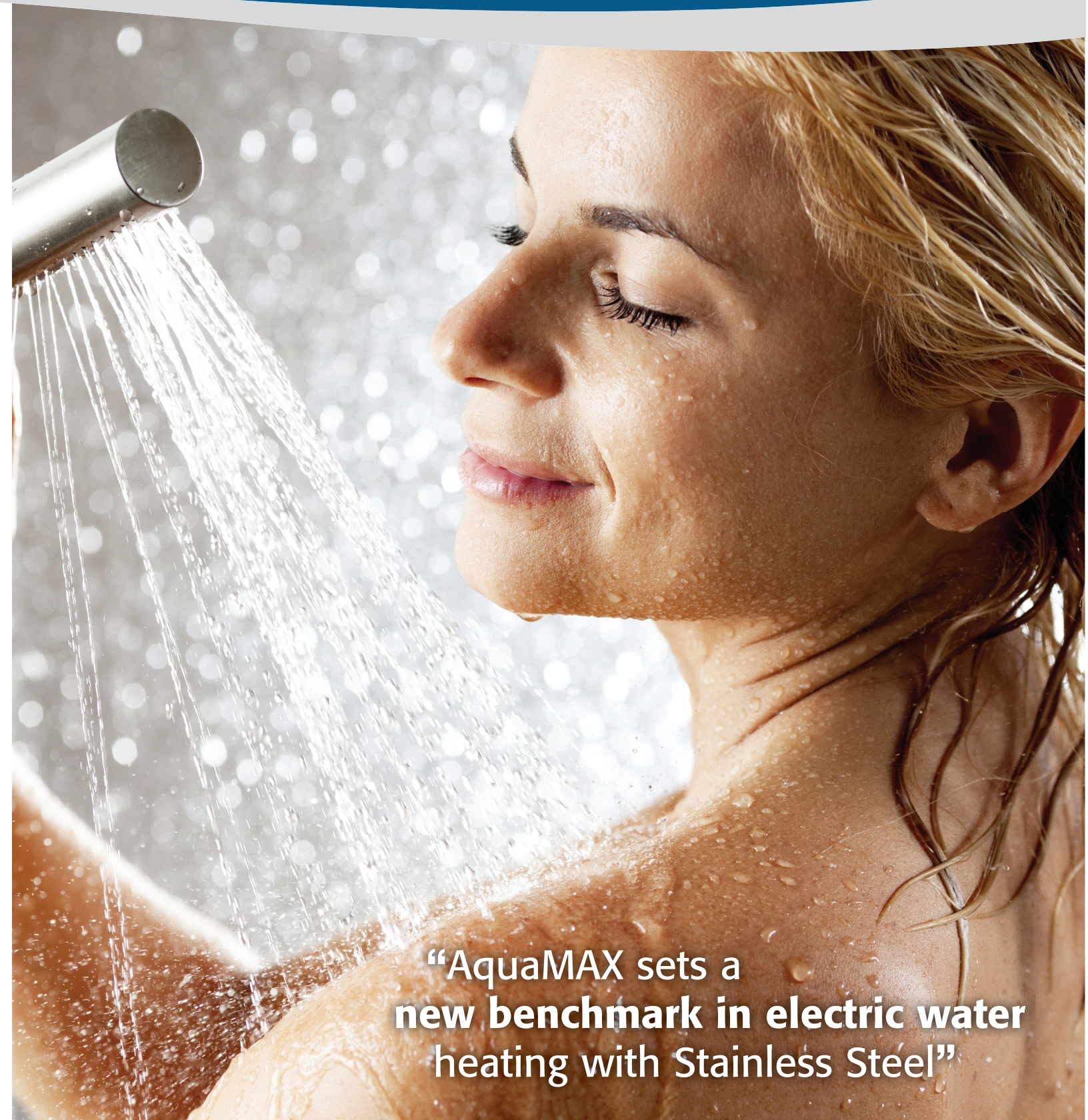
- Stainless Steel Cylinder
- 10 year cylinder warranty¹
- Energy Efficient² - Up to 27% more efficient than MEPS
- No Anode
- Up to 50% Lighter³

*Note: AquaMAX Stainless Steel Water Heaters are not recommended for installation in some areas. Refer to the AquaMAX website for details of areas not recommended and for which product is not covered by warranty.



	C	V	O	H	A	B	D
315	145	710	1760	1750	1540	230	620
250	145	710	1440	1430	1220	230	620
160	110	580	1615	1605	1425	185	487
125	110	580	1295	1285	1105	185	487
80	110	580	885	875	695	185	487

Note: Allow additional top clearance for hot outlet fittings and pipe work.



“AquaMAX sets a new benchmark in electric water heating with Stainless Steel”

Stainless Steel Electric Specifications	315 Litre				250 Litre				160 Litre				125 Litre				80 Litre					
	E115S36-SS	E115S48-SS	E115T36-SS	E115T48-SS	E250S24-SS	E250S36-SS	E250S48-SS	E250T36-SS	E250T48-SS	E160S18-SS	E160S24-SS	E160S36-SS	E160T24-SS	E160T36-SS	E160T48-SS	E125S18-SS	E125S24-SS	E125S36-SS	E125S48-SS	E80S18-SS	E80S24-SS	E80S36-SS
Number of People Served	4-6	4-6	4-6	4-6	3-5	3-5	3-5	3-5	3-5	2-4	2-4	2-4	2-4	2-4	2-4	2-3	2-3	2-3	2-3	1-2	1-2	1-2
Hot Water Delivery	Litres 315	Litres 315	Litres 315	Litres 315	Litres 250	Litres 250	Litres 250	Litres 250	Litres 250	Litres 160	Litres 160	Litres 160	Litres 160	Litres 160	Litres 160	Litres 125	Litres 125	Litres 125	Litres 125	Litres 80	Litres 80	Litres 80
Boost Capacity (Twin Element)			62	62				52	52				46	46	46							
Weight (empty)	kg 55	kg 55	kg 55	kg 55	kg 45	kg 45	kg 45	kg 45	kg 45	kg 40	kg 40	kg 40	kg 40	kg 40	kg 40	kg 30	kg 30	kg 30	kg 30	kg 25	kg 25	kg 25
Maximum Loading	Watts 3600	Watts 4800	Watts 3600	Watts 4800	Watts 2400	Watts 3600	Watts 4800	Watts 3600	Watts 4800	Watts 1800	Watts 2400	Watts 3600	Watts 4800	Watts 2400	Watts 3600	Watts 1800	Watts 2400	Watts 3600	Watts 4800	Watts 1800	Watts 2400	Watts 3600
Heating Element Upper			3600	4800				3600	4800				2400	3600	4800							
Heating Element Lower	3600	4800	3600	4800	2400	3600	4800	3600	4800	1800	2400	3600	4800	2400	3600	1800	2400	3600	4800	1800	2400	3600
Voltage (single phase)	240Vac				240Vac				240Vac				240Vac				240Vac					
Maximum Supply Pressure																						
- with expansion control valve	680 kPa				680 kPa				960kpa				960kpa				960kpa					
- without expansion control valve	800 kPa				800 kPa				1120 kPa				1120 kPa				1120 kPa					
Pressure & Temp Relief Valve	1000 kPa				1000 kPa				1400 kPa				1400 kPa				1400 kPa					
ECV setting	850 kPa				850 kPa				1200 kPa				1200 kPa				1200 kPa					
Thermostat setting (Maximum)	75°C				75°C				75°C				75°C				75°C					
Hot & Cold Water connection	Rp 20 (3/4") Female				Rp 20 (3/4") Female				Rp 20 (3/4") Female				Rp 20 (3/4") Female				Rp 20 (3/4") Female					
Warranty (Cylinder) ¹	10 years				10 years				10 years				10 years				10 years					
Warranty (Parts & Labour) ¹	1 year				1 year				1 year				1 year				1 year					
Protection rating	IPX4				IPX4				IPX4				IPX4				IPX4					
Watermark Licence No.	WMKA00200				WMKA00200				WMKA00200				WMKA00200				WMKA00200					
Electrical Safety Approval No.	SGSEA/120769				SGSEA/120769				SGSEA/120769				SGSEA/120769				SGSEA/120769					
Exceeds MEPS by:	20%	21%	22%	25%	15%	18%	20%	27%														

¹ Full warranty details available on request from AquaMAX . Call Toll Free 1800 676 000 or view at www.aquamax.com.au
² Refer to specification table for all models ³ 50% lighter than vitreous enamel models of the same capacity



AquaMAX Australia Pty Ltd 463-467 Warrigal Road Moorabbin Vic 3189 **Toll Free: 1800 676 000**
 Ph: (03) 9532 2200 Sales Fax: (03) 9532 5244 Service Fax: (03) 9556 5534 A.B.N. 37 138 189 689
 Email: sales@aquamax.com.au For more information visit www.aquamax.com.au

© Copyright 2012 AquaMAX Australia Pty Ltd. Neither whole nor part of this publication may be reproduced without permission. Materials, product data and specifications are subject to change without notice.

Part No. AQ0905047-A

AUSTRALIAN MADE STAINLESS STEEL ELECTRIC WATER HEATERS

AQUAMAX
80L

AQUAMAX
125L

AQUAMAX
160L

AQUAMAX
250L

AQUAMAX
315L



*Stainless Steel cylinders can resist corrosion for longer than conventional vitreous enamel cylinders.**

10 YEAR CYLINDER WARRANTY¹

LIGHTER

Significantly lighter (up to 50%) than water heaters with conventional vitreous enamel cylinders, for easier handling.

NO ANODE

Unlike vitreous enamel cylinders, Stainless Steel cylinders DO NOT require a sacrificial anode to prevent corrosion. So there is no need for inspection or replacement of the anode over the life of the water heater.

ENERGY EFFICIENT

Exceeds MEPS (Minimum Energy Performance Standard) by up to 27% for greater energy efficiency.²

A SIZE FOR ANY HOME

Models from 80 litres to 315 litres for indoor or outdoor installation

STAINLESS STEEL FITTINGS

For all water connections.

TOP OF TANK HOT WATER OUTLET

Maximises quantity of hot water delivered. Universally fits either left or right handed installations.

TWIN ELEMENT OPTION

Available for heavy hot water demand in 160, 250 and 315L models.

27% UP to 27%² more efficient than MEPS!

ALL NEW Stainless Steel Electric Water Heaters

Experience the superior performance of stainless steel in the new AquaMAX Stainless Steel Electric Water Heater range. Stainless Steel cylinders resist corrosion for longer than conventional vitreous enamel with the added assurance of purity from the material of choice for kitchens and surgeries.

AquaMAX Stainless Steel Electric Water Heaters do not require sacrificial anode protection which, combined with significant weight advantages, make them easier to transport, install and maintain.



Stainless Steel fittings on all outlets.



GreenPlumbers[®]
SUPPORTING OUR COMMUNITY