



Conergy SunTop Trapez

The Conergy SunTop Trapez mounting system has been specifically developed for use on trapezoidal roofs. Intelligent brackets are mounted to the sides so that the trapezoidal sheeting can bear greater loads and uneven roof sections can be levelled out. By hooking on the brackets, the support rails can be easily fitted in place. Thanks to fewer pre-assembled components, this system can be fitted quicker and more economically.

Variable application

Both framed and unframed modules can quite easily be installed with the trapezoidal sheet system onto nearly all commercially available trapezoidal sheet metal¹ roofs. The intelligent holding devices fit the most diverse trapezoidal shapes and load situations. Even levelling out the roof is possible.

Flexible arrangement

Either the complete roof surface or part of it can be covered with the modules. The standard components allow for module installation in portrait and landscape.

Fast assembly

The Conergy SunTop Trapez was especially developed for quick and easy installation. The simple clip-in principle of the rail fixation and the high pre-assembly and customisation standards of Conergy, guarantee a quick assembly.

Considerable cost saving

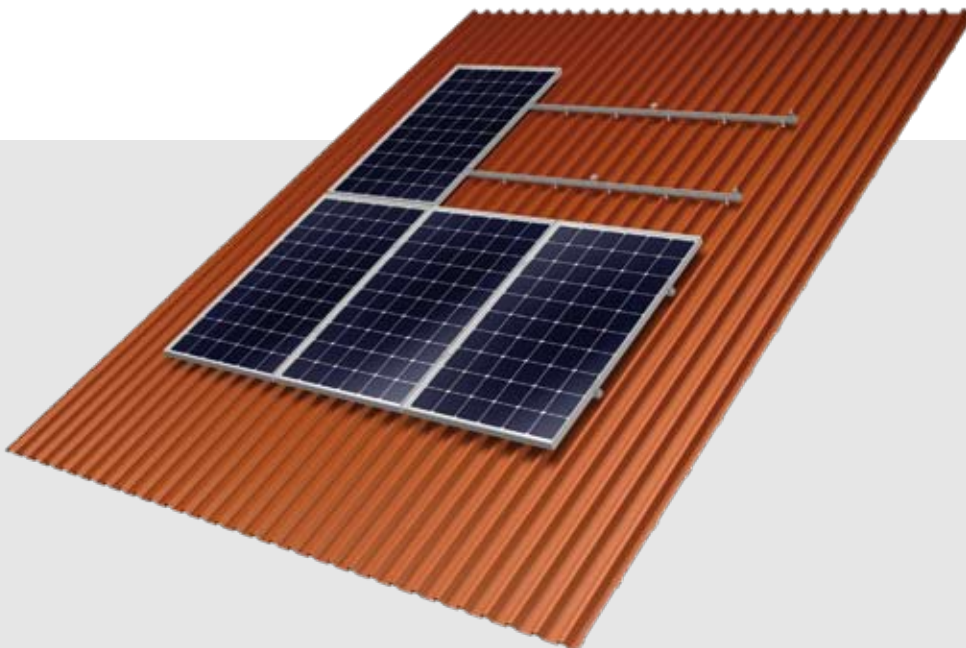
The Conergy SunTop Trapez is an overall cost-effective fixing solution. The required quantity of rails and fixing points can be optimised due to project-specific static calculation. All components can be used flexibly and as they are kept in stock, lead times can be reduced significantly. Additionally, the planning and installation phase is short which further reduces the overall cost of this particular system.

Little planning requirement, maximum safety

With the design software from Conergy, the material for a standard installation can be designed in minutes. The software will even calculate specific static verifications and create a parts list with all necessary components.

Maximum life span

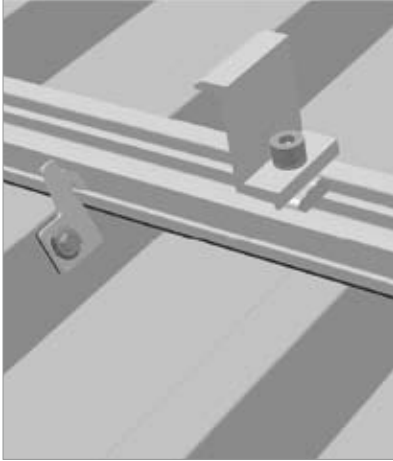
All components are made from aluminium and stainless steel. The high resistance to corrosion guarantees a maximum life span. In addition, all parts can be recycled.



¹ The Conergy SunTop Trapez can be used on nearly all available trapezoidal coverings with a material thickness of at least 0.63 mm. Please contact us for more detailed information ahead of your planning.



Conergy SunTop Trapez



Fixation detail



Portrait installation



Landscape installation

Conergy SunTop Trapez

Application areas	Pitched roof – on roof
Roof coverings	Trapezoidal sheet metal
Min. sheet thickness	0.63 mm
Min. bead height	Free ¹
Roof pitch	Up to 20° ²
Height of building	Up to 20 m ²
PV module	Unframed, framed
Module orientation	Portrait, landscape
Size of module	Free ³
Position of module	Free
Possible height levelling	Up to 15 mm
Distance between rail fixations	Depending on load situation (automatic verification per design software)
Standards	Eurocode 1 – Action on structures Eurocode 9 – Design of aluminium structures
Profiles	Extruded aluminium profiles (EN AW 6063 T66)
Rail fixations	Aluminium (EN AW 5754)
Small parts	Stainless steel (V2A)
Colour	Aluminium, cold pressed
Warranty	10 years ⁴

¹ The bead height is flexible. In case of a very low bead height (below 20 mm) a holder can be screwed on top of the trapezoidal sheet alternative to the standard holder, which is fixed laterally. The installation must be in accordance with local regulations for roof covering.

² Depending on the site situation, the building, the selected fixing devices and the type of module, other values may apply. With the Conergy quick configurator tool you can easily calculate the permissible maximum values for each plant.

³ Based on the expected thermal expansion due to temperature and the thus occurring tension within the rails, we recommend a maximum length of 12 m per module row.

⁴ The exact details are to be found in the warranty conditions of Conergy AG.

Available at: