



# Conergy SolarFamulus Air

The Conergy SolarFamulus Air was specially developed for use on commercial flat roofs with low admissible loads. The aerodynamic design of the Conergy SolarFamulus Air is such that the airflow creates a vacuum, which holds the frame down without it being screwed to the roof. In addition, the Conergy SolarFamulus Air is one of the fastest flat roof systems on the market to install.

## Flexible modular system

With the Conergy SolarFamulus Air, multiple rows of modules can be connected to each other. The Conergy SolarFamulus Air has a standard pitch of 15°. <sup>1</sup> The pitch of 15° allows minimum ballast with an optimum of profit. It is installed in a composite of at least 10 m<sup>2</sup>. Modules can be arranged flexibly in landscape installation.

## Rapid installation

All components are designed for easy installation. The established Quickstone Technology, pre-assembly and a clever product design with a low number of overall parts all add up to minimal installation time and the need for only very few tools.

## Static reliability

On demand <sup>2</sup>, an official verifiable static calculation is available. Through extensive aerodynamic testing during the development phase, the Conergy SolarFamulus Air is statically verified despite minimal ballasting.

## Maximum service life

All components are made of either aluminium or stainless steel. Their high resistance to corrosion guarantees maximum service life and full recyclability.



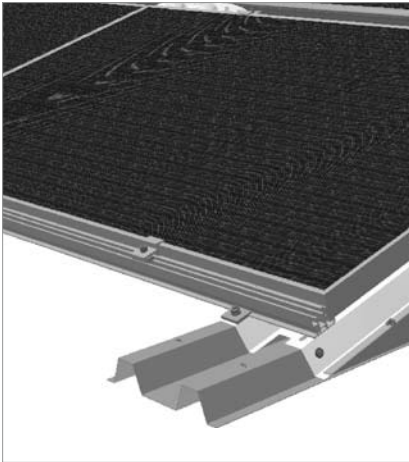
<sup>1</sup> Others on demand.

<sup>2</sup> At extra cost.

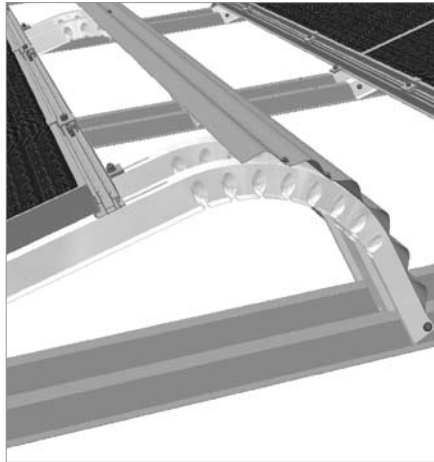
\*Preliminary version, status 01.06.2011



# Conergy SolarFamulus Air



Front detail



Top detail

Conergy SolarFamulus Air	
<b>Application</b>	Flat roofs <sup>1</sup>
<b>Height of building</b>	Dependent on wind loads on site
<b>PV modules</b>	Framed
<b>Module layout</b>	Composite (min. 10 m <sup>2</sup> )
<b>Module orientation</b>	Landscape
<b>Pitch</b>	15° (other upon request)
<b>Size of module array</b>	Any size possible, min. 10 m <sup>2</sup>
<b>Position of the module array</b>	No special requirements
<b>Roof clearance</b>	6 cm (other upon request)
<b>Standards</b>	Eurocode 1 – Action on structures Eurocode 9 – Design of aluminium structures <sup>2</sup>
<b>Supporting profiles</b>	Extruded aluminium (ENAW 6063 T66), (EN AW 6060 T6)
<b>Sheet metal components</b>	Aluminium
<b>Small parts</b>	Stainless steel (V2A)
<b>Warranty</b>	10 years <sup>3</sup>

<sup>1</sup> Attention: For any project, please check the static suitability of the building!

<sup>2</sup> Official assessable static calculation available on request, at extra cost.

<sup>3</sup> Please find the exact terms in the Conergy AG warranty document.

\*Preliminary version, status 01.06.2011

Available at: