



Conergy SolarGiant

The Conergy SolarGiant has a strong reputation in the area of open-terrain mounting systems. Based on concrete fundamentals, it is a rock-solid system with high flexibility. Due to the pre-fitting of components it enables installation in record time. All materials used are corrosion-resistant and therefore result in a very long lifetime of the product.

Flexible ground-mount system

The Conergy SolarGiant was specially designed for use in photovoltaic systems in open areas. Framed and unframed modules can be arranged in various configurations up to a surface of 45 m².

Ecological and functional

The 0.8 m¹ minimum module elevation above the ground prevents desolation and allows a secondary use of the terrain as pasture land. At the same time, the elevation prevents the modules from being shadowed by plants or snow.

Significant savings

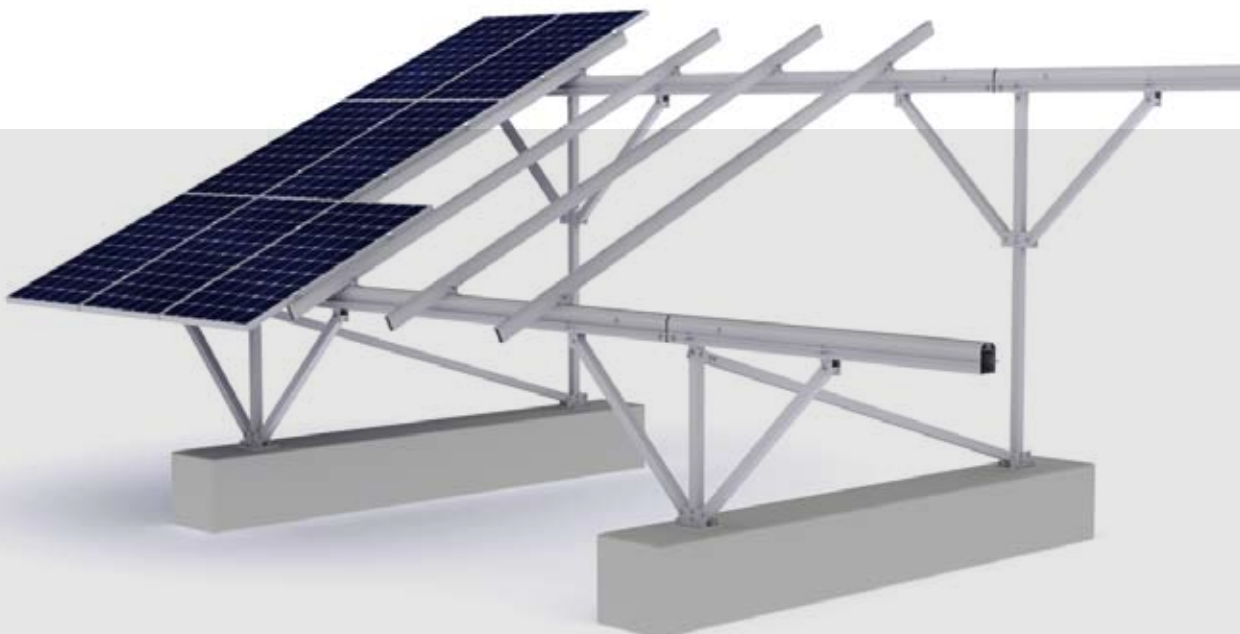
The components of the Conergy SolarGiant are pre-fitted according to the chosen module type and configuration. All connecting points of the intelligent structure have been specifically designed to facilitate installation. Innovative module support rails further reduce time and cost. All in all, this guarantees record installation times.

Static reliability

Conergy's service includes a static verification of all Conergy SolarGiant configurations offered. On request², an official static calculation is available.

Maximum service life

All components are made of aluminium and stainless steel. This choice of materials guarantees both full recyclability and a maximum service life due to high resistance to corrosion.



¹ Other on request.

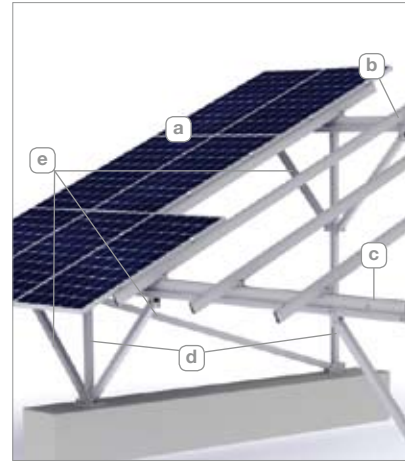
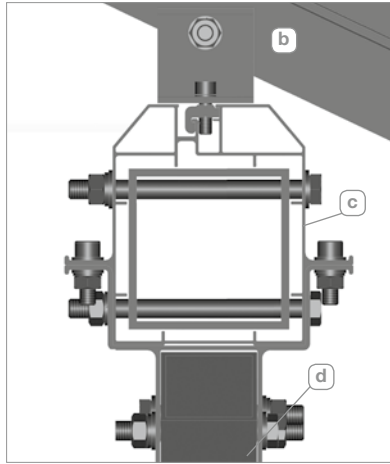
² At extra cost.



Conergy SolarGiant

Overview

- a** PV module
- b** Module support profile
- c** Cross beam with joiner piece
- d** Legs
- e** Struts



Detail cross beam

Conergy SolarGiant	
Application	Open terrain – ground mount
Permissible charges	2,200 Pa ¹
PV modules	Framed, unframed
Module layout	Approx. 45 m ² ; standard: 3 rows in portrait orientation, the number of modules per row depending on the type of module ²
Module orientation	Landscape, portrait
Module inclination	15°–35° ³
Size of the module array	Approx. 45 m ² ⁴
Ground clearance	Approx. 0.8 m ²
Standards	Eurocode 1 – Actions on structures Eurocode 9 – Design of aluminium structures ⁵
Support profiles	Extruded aluminium (EN AW 6060 T6), (EN AW 6063 T66)
Small parts	Stainless steel (V2A)
Colour	Natural
Warranty	10 years ⁶

¹ For a module surface of 45 m²; higher loads on demand.
² Within the limitations of the maximum surface allowable and the specific module size, various configurations are possible.
³ Other on request.
⁴ Bigger on demand.
⁵ Official static calculation available on request, at extra cost.
⁶ Please find the exact terms in the Conergy warranty document.

Supplier: