

Picture a Greener Future



Robert Bosch (Australia) Pty Ltd
Thermotechnology Division (STT)
Locked Bag 66
CLAYTON SOUTH, VIC, 3169
AUSTRALIA

www.bosch-climate.com.au

© Robert Bosch (Australia) Pty Ltd, 2011
Subject to change
Printed in Australia | 07/11 | Printer



 **BOSCH**
Invented for life



We have not been very kind to our planet

For thousands of years our earth has provided us with the climate and natural resources we need to survive but, over the past 100 years or so, our actions have been harming the world in which we live.

Fuel resources are fast running out and we are now faced with the reality of global warming and the impact it will have on our climate.

Planet earth is in danger.

We must act now – while we still have time to make a difference.

If we can all make a small change to the way we live, it will have a big impact on our future.

Save energy. Save our planet.



Meet the Greens

The Greens are a very thoughtful and considerate family.

They try to save energy wherever they can, to save money but much more importantly to help protect the world in which we live.

Take a look at the Green's house.

Loft insulation

An insulated hot water cylinder

Double glazed windows

Cavity Wall insulation

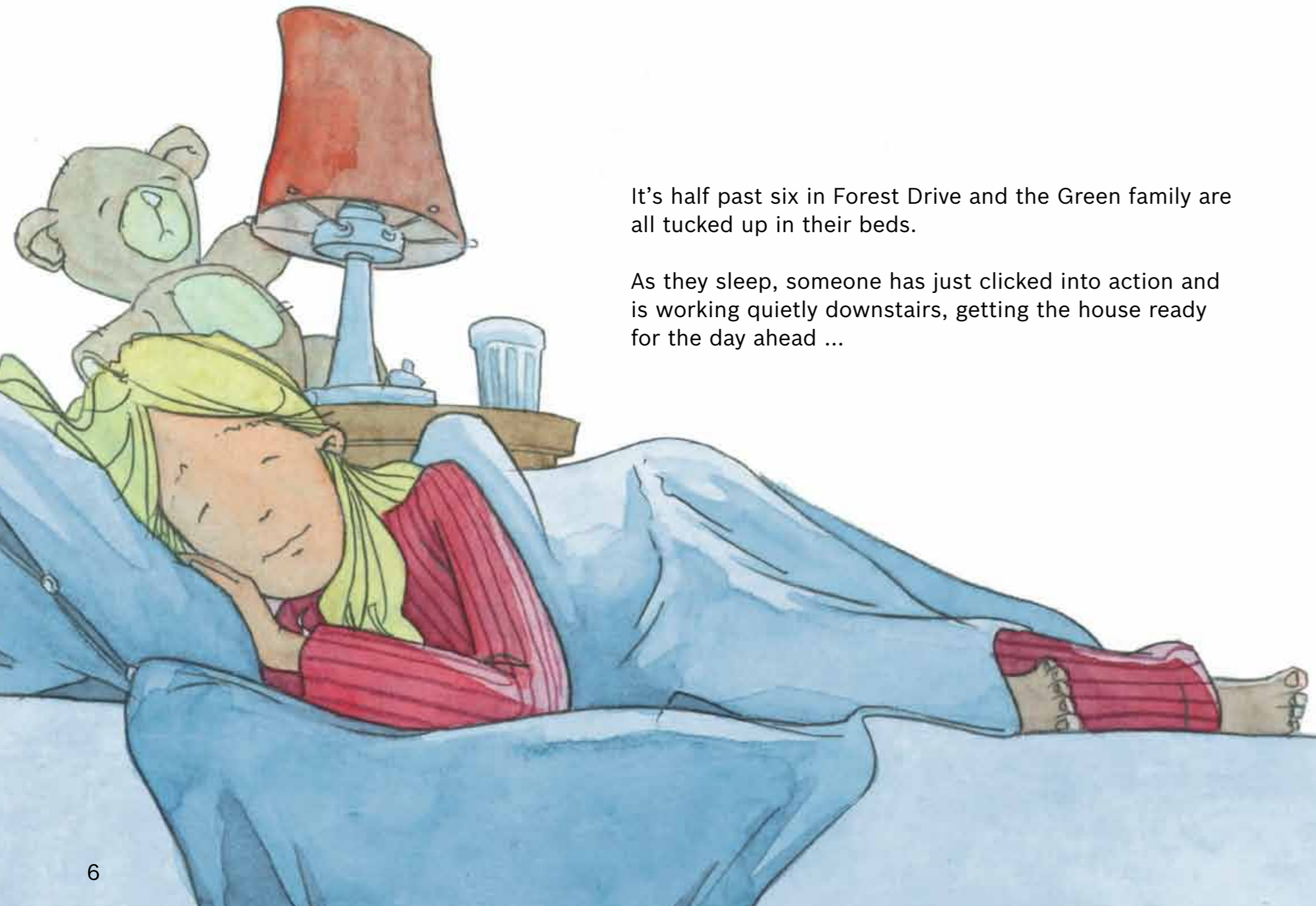
An energy-efficient condensing boiler

Radiators with temperature control

It is a happy house, full of lots of special energy saving features which help to make it warm and cosy.

More than one third of the energy used in the home is for heating and cooling – see how the Greens have made their house an energy-efficient and environmentally-friendly home.

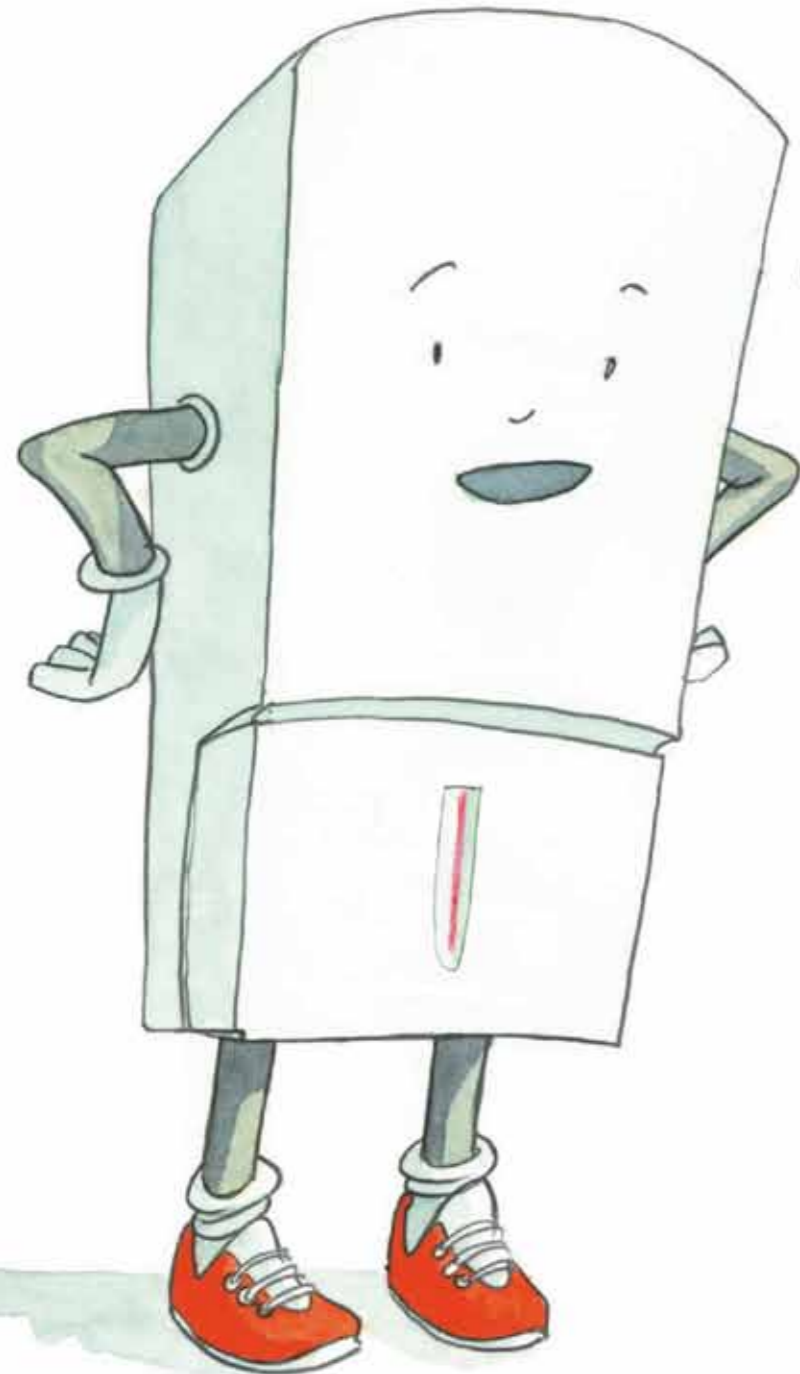
Read on to find out about another way the Greens will be saving energy ...



It's half past six in Forest Drive and the Green family are all tucked up in their beds.

As they sleep, someone has just clicked into action and is working quietly downstairs, getting the house ready for the day ahead ...



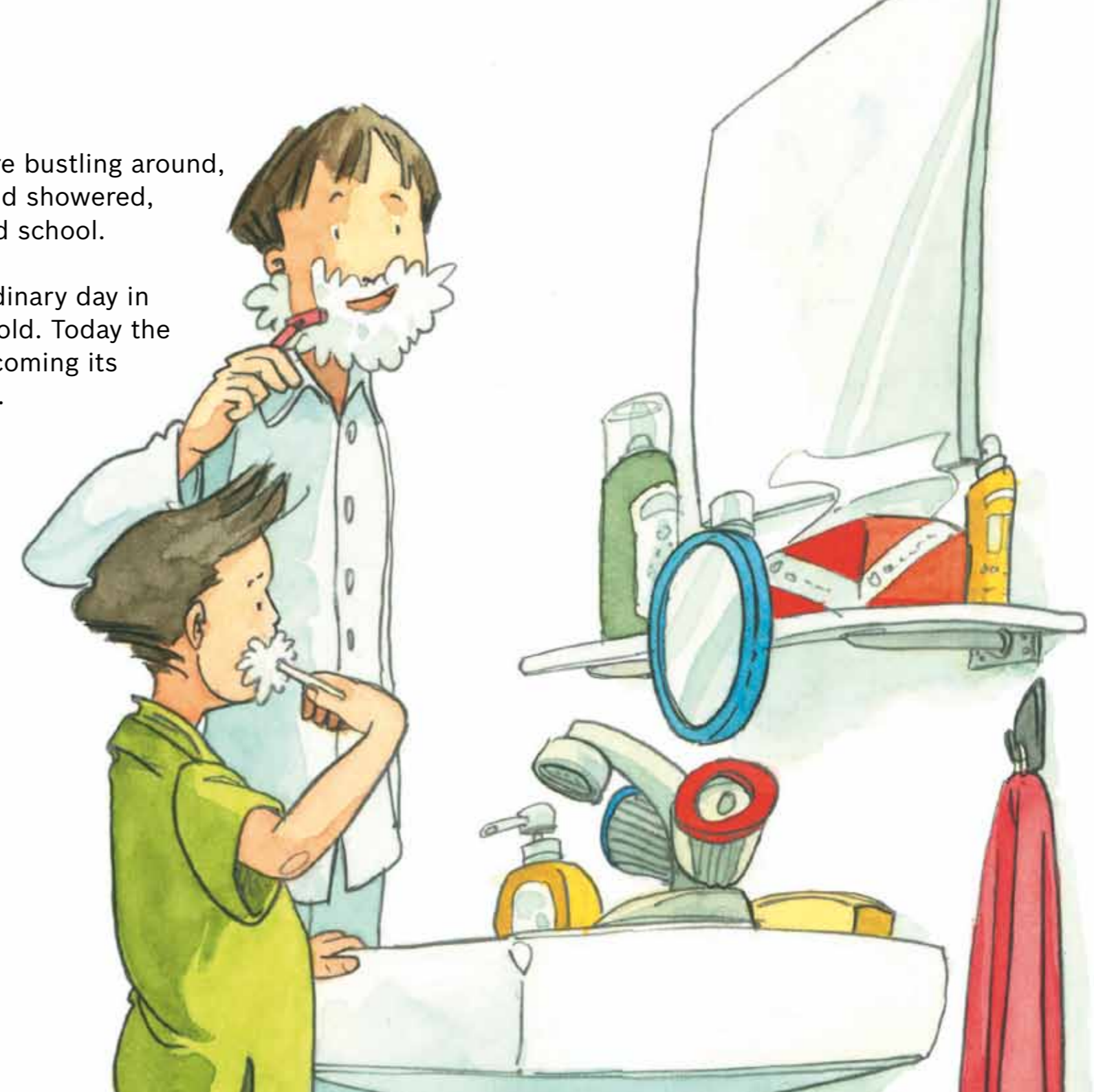


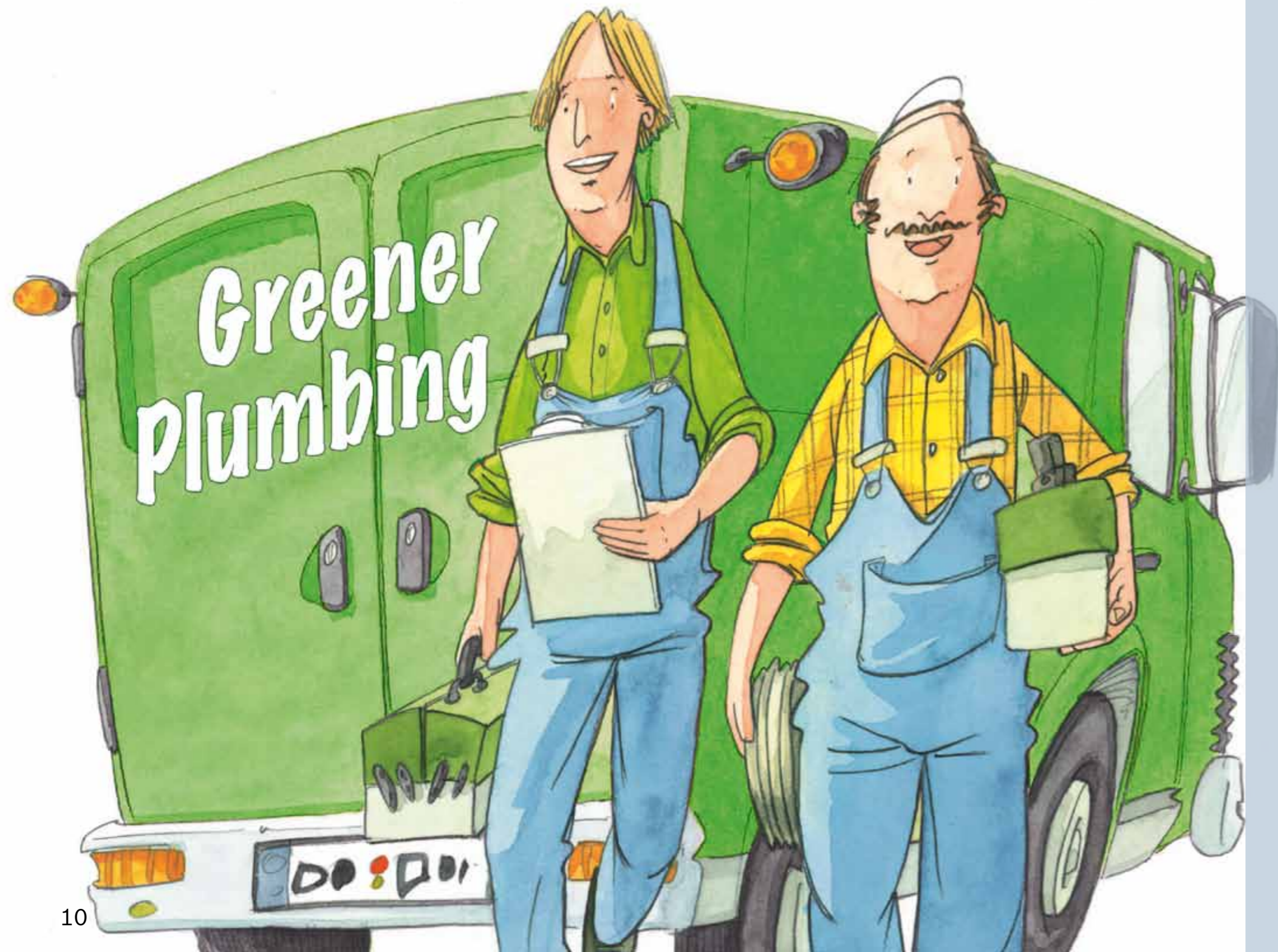
Bobby the boiler loves his job, and prides himself on protecting the Green family from the cold, making sure their home is cosy and warm and that there's plenty of hot water for lovely warm showers and baths.

Bobby is a Bosch Condens Wall Boiler. He is made to be very environmentally-friendly by using less fuel than older boilers.

Soon the family are bustling around, getting washed and showered, ready for work and school.

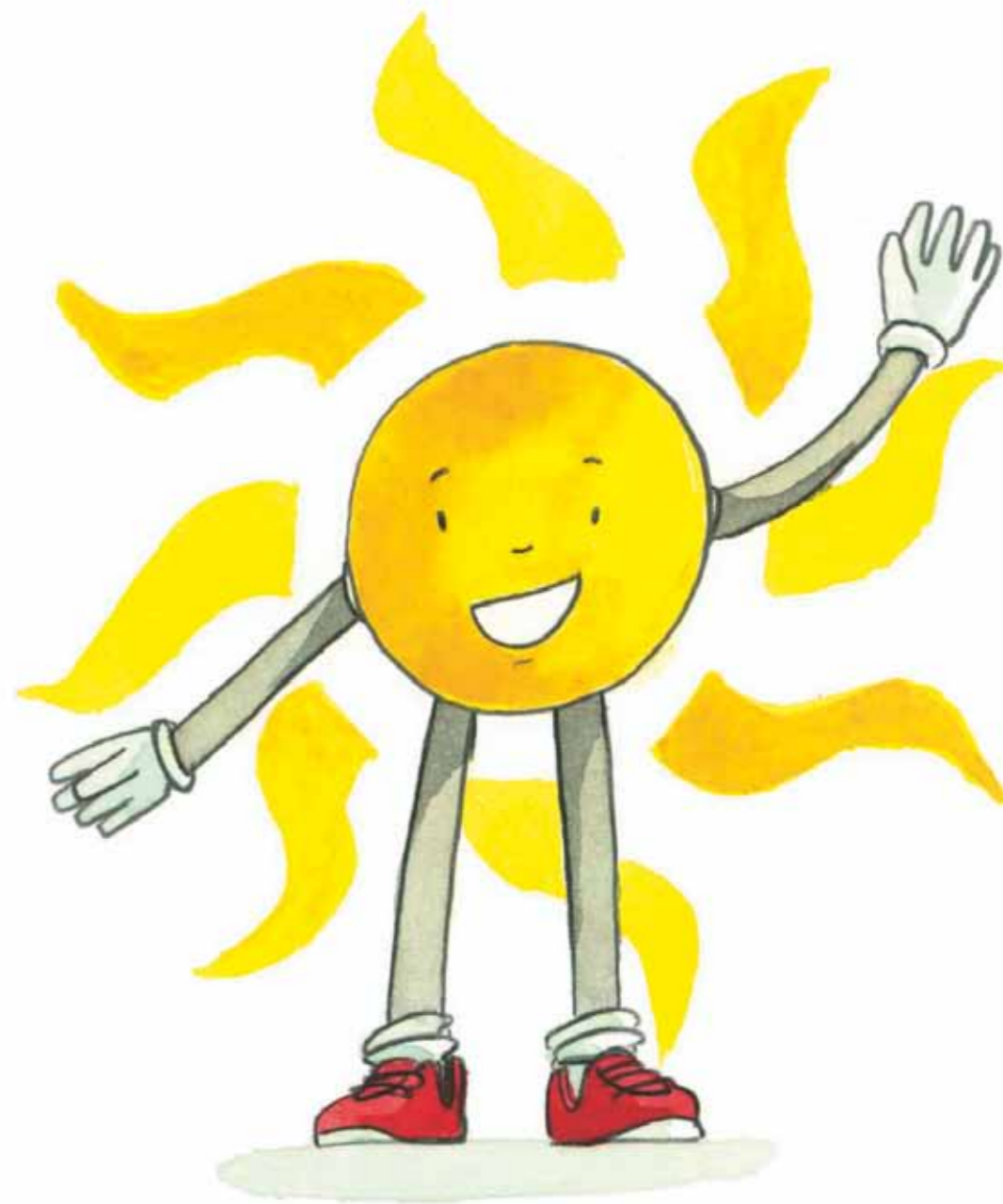
Yet today is no ordinary day in the Green household. Today the family will be welcoming its newest member ...

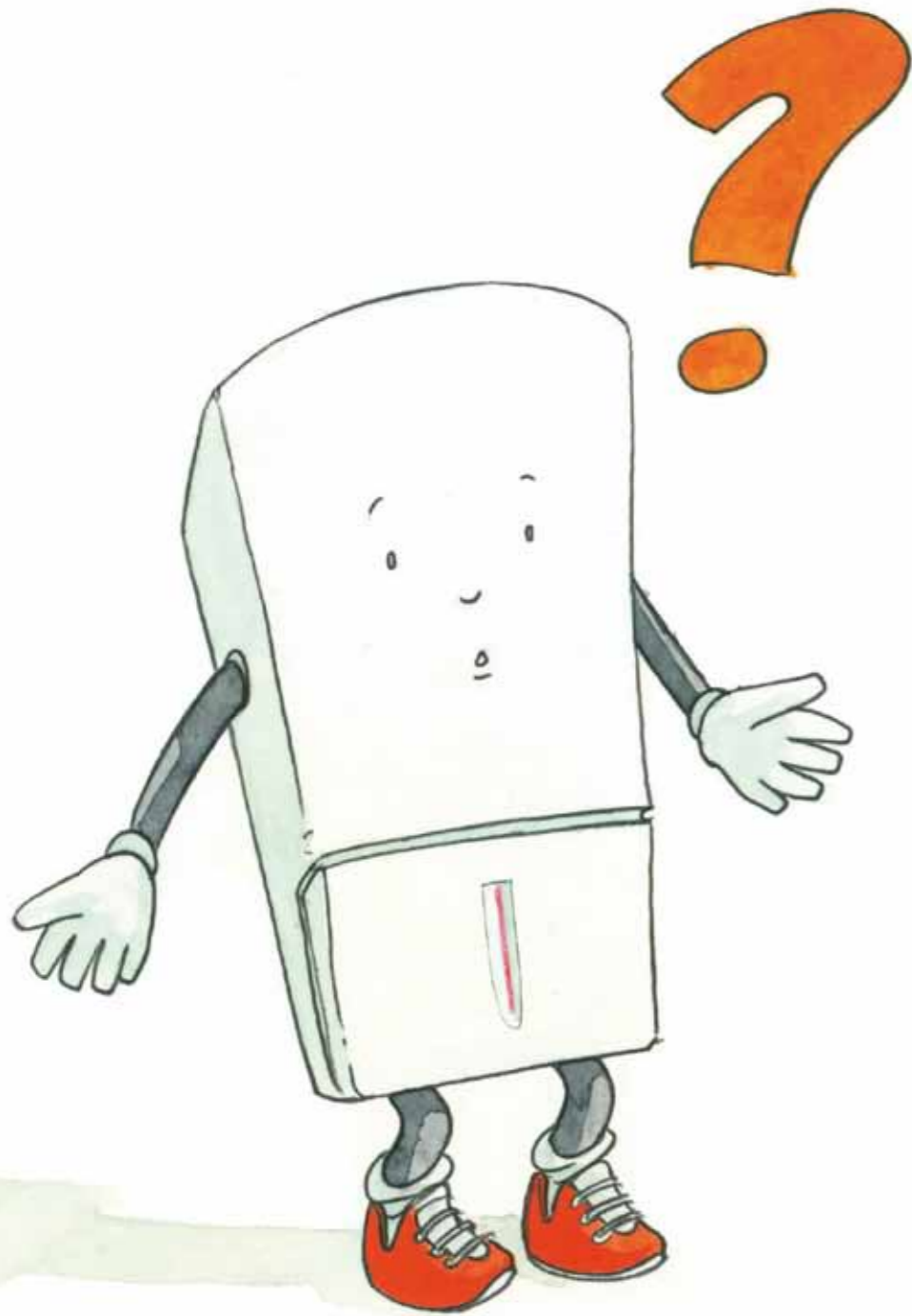




... Solar Sam

At nine o'clock the doorbell rings and Mr. Comfy and Mr. Snug, who work for the local plumbing company, have arrived to help Solar Sam settle in to the Green's home.





Bobby the boiler wonders what all the fuss is about, when suddenly he hears a friendly voice ...

“Hi Bobby, I’m Solar Sam. Mr. Comfy and Mr. Snug have told me all about you!”

“Nice to meet you, but what’s going on?” replies Bobby, a little confused.

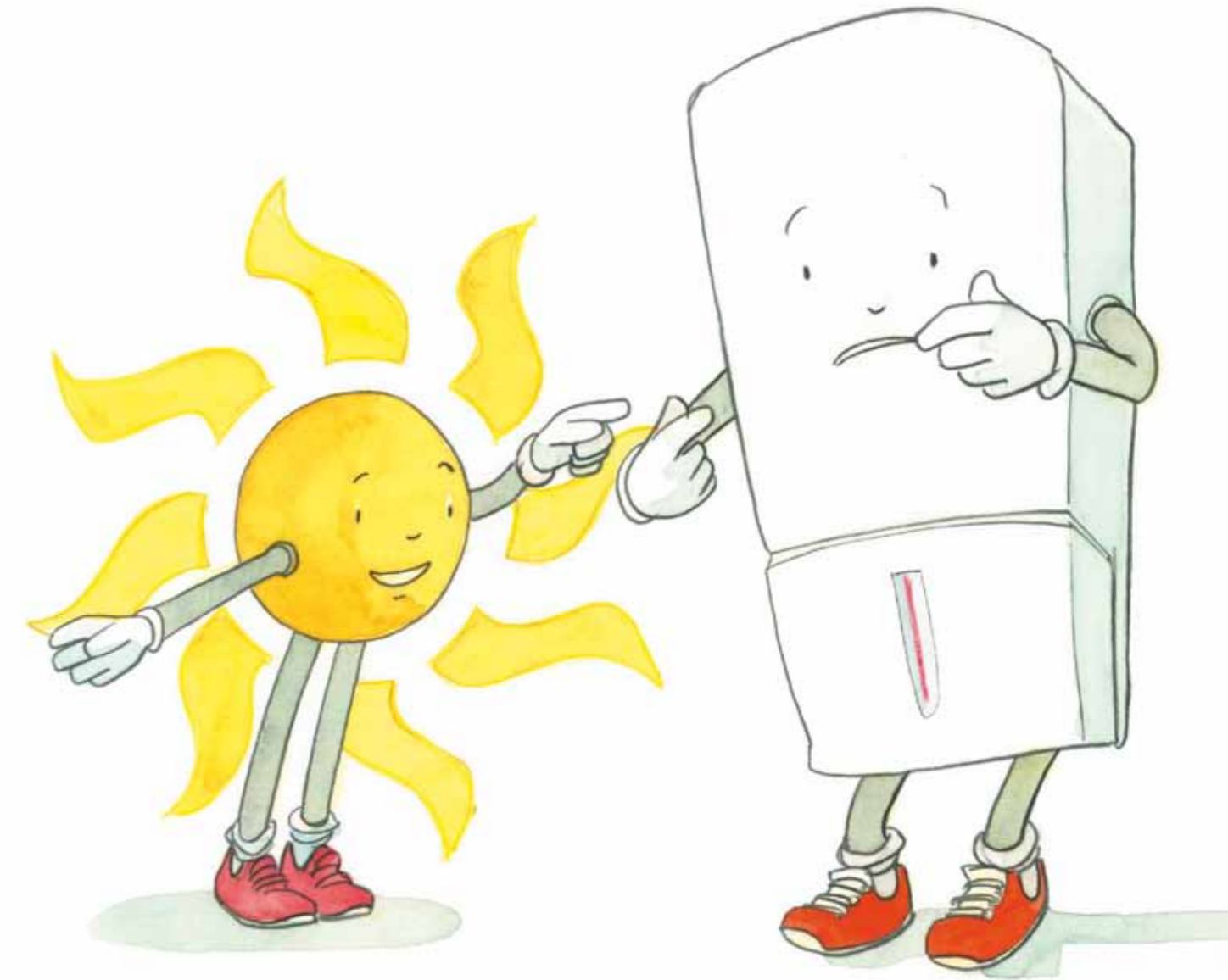
“I’ve come to help you to look after the Greens,” Solar Sam explains.

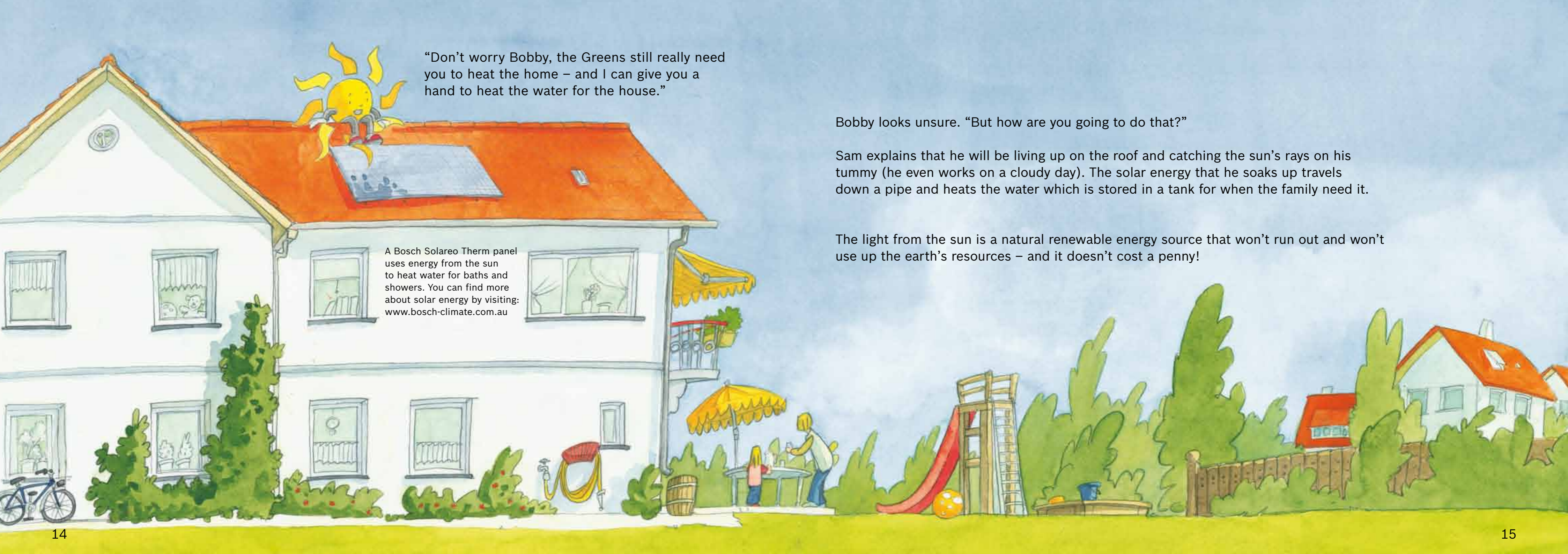
“What do you mean you’re here to help me?” asks Bobby.

“I’m going to give the Greens lovely piping hot water to help keep themselves and the home nice and clean.”

“But that’s my job!” Bobby gasps.

“I give the Greens everything they need!”





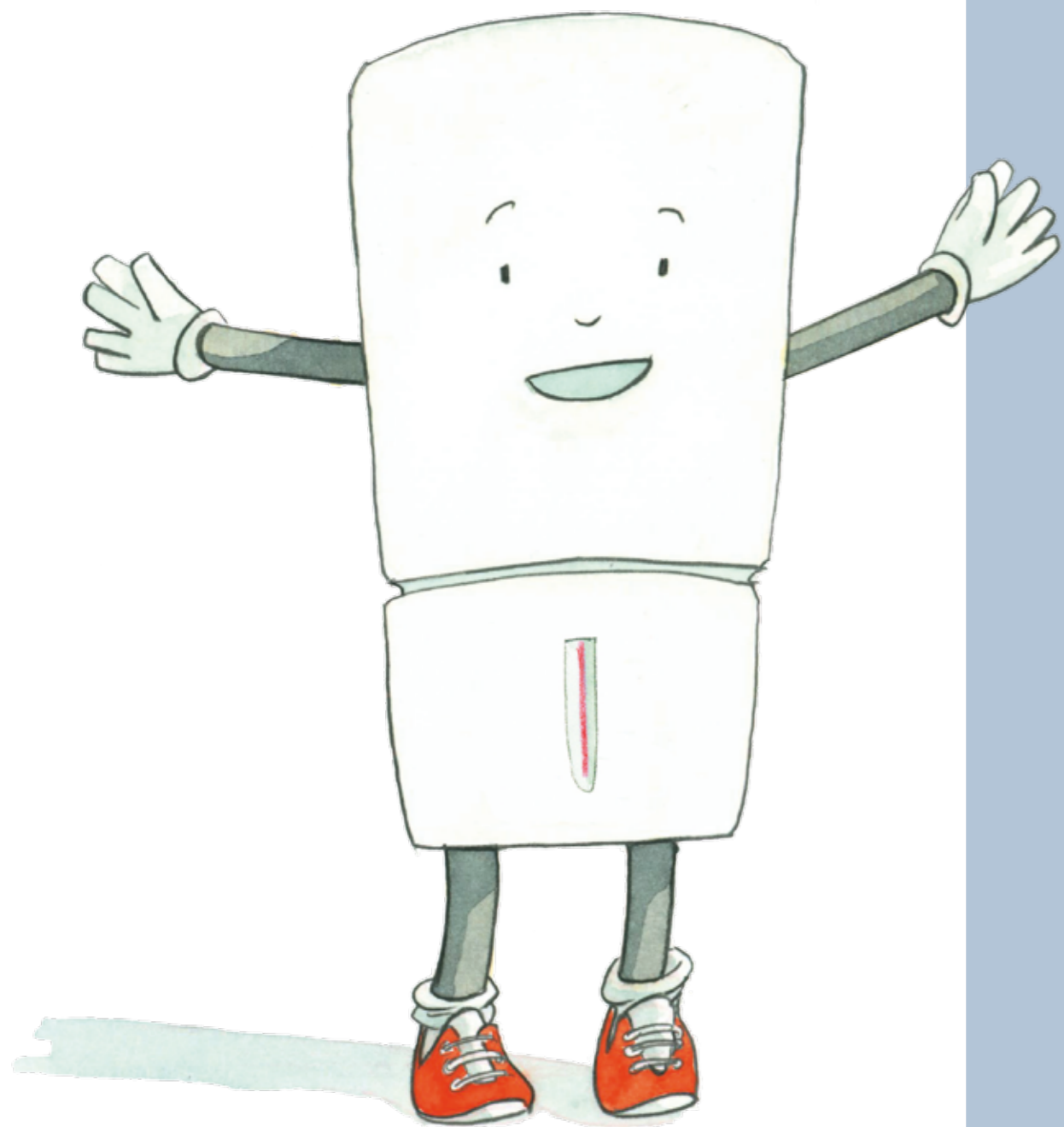
“Don’t worry Bobby, the Greens still really need you to heat the home – and I can give you a hand to heat the water for the house.”

A Bosch Solareo Therm panel uses energy from the sun to heat water for baths and showers. You can find more about solar energy by visiting: www.bosch-climate.com.au

Bobby looks unsure. “But how are you going to do that?”

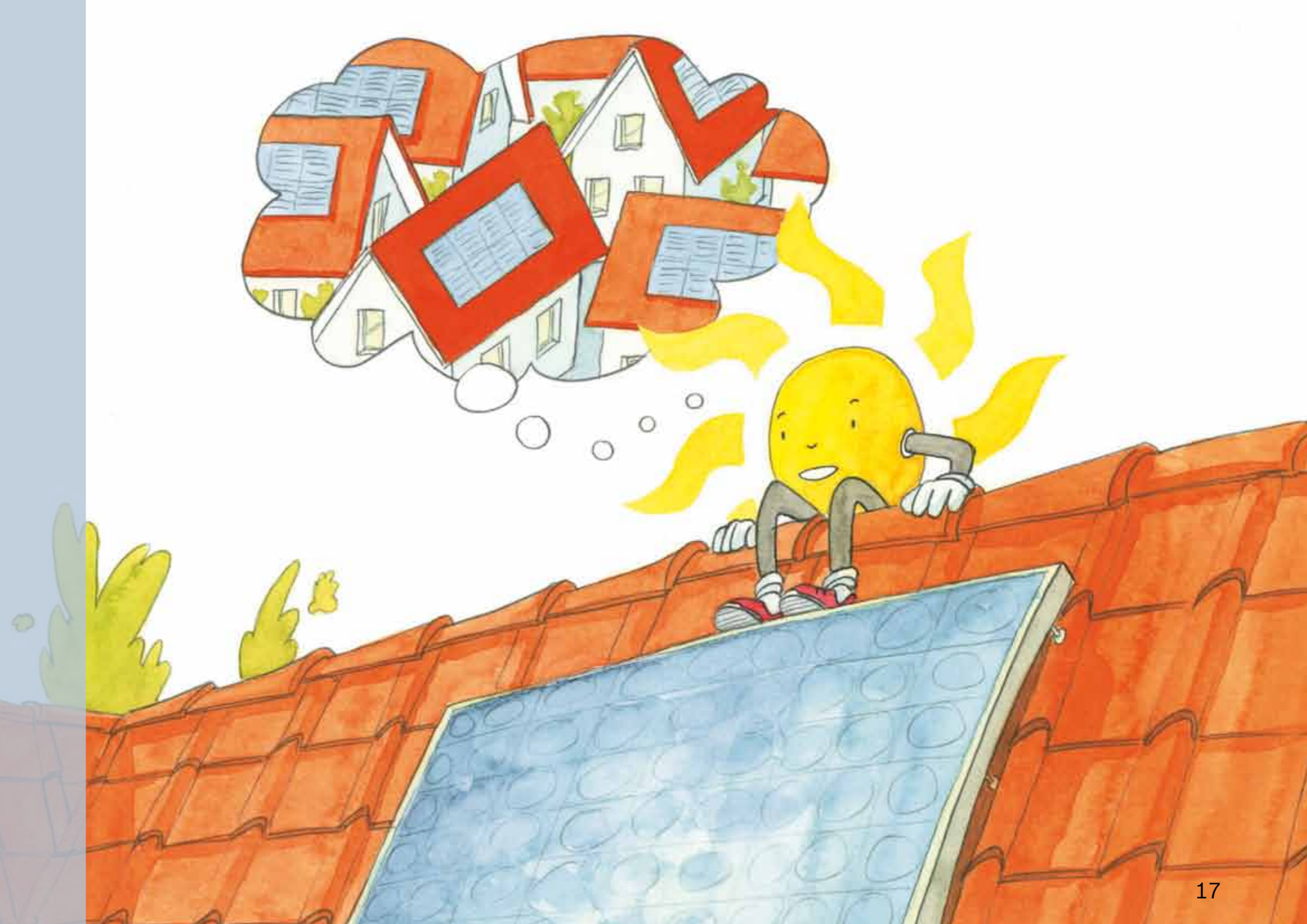
Sam explains that he will be living up on the roof and catching the sun’s rays on his tummy (he even works on a cloudy day). The solar energy that he soaks up travels down a pipe and heats the water which is stored in a tank for when the family need it.

The light from the sun is a natural renewable energy source that won’t run out and won’t use up the earth’s resources – and it doesn’t cost a penny!



Bobby the Boiler is so relieved that the Greens still need him and agrees that Solar Sam's help will be very useful. Co-operation means sharing the load and working together with a friend is lots of fun!

The following morning, as the sun rises, Solar Sam watches over the goings on in Forest Drive, wondering whether any of the neighbouring houses will soon have any solar friends joining him up on the roof ...



There are many ways to save energy at home.

Follow the Green family's 'Energy Saving Tips' to help make a difference. By making these small changes to the way in which we live it will greatly reduce the harm we are causing our planet.



Don't leave the television or other appliances on standby or charging when not necessary.



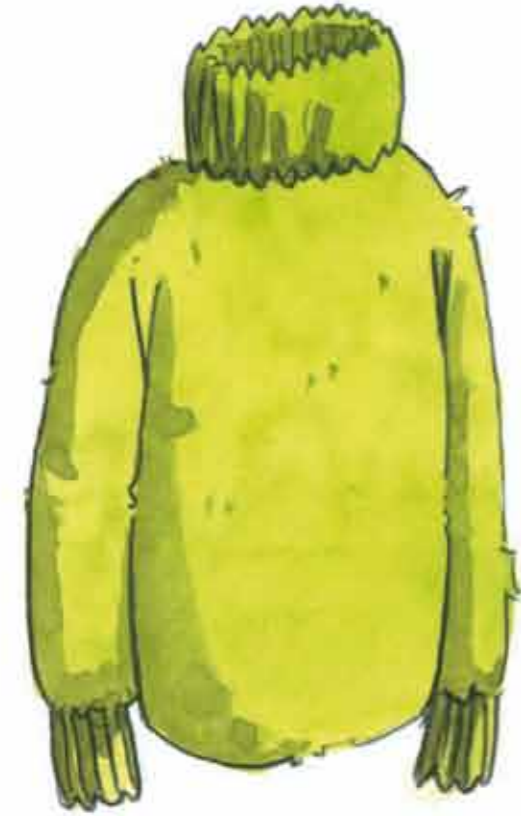
Turn the tap off whilst brushing your teeth.



Make sure you turn the tap off! A dripping hot water tap wastes energy and in one week wastes enough water to fill half a bath.



Replace old light bulbs with energy saving bulbs. They can last 12 times longer than ordinary bulbs.



If you are cold, why not put on extra clothing rather than turning up the heating?



Make sure your Heating and Hot Water System is serviced regularly, keeping it working efficiently.



Switch off lights if you leave a room.

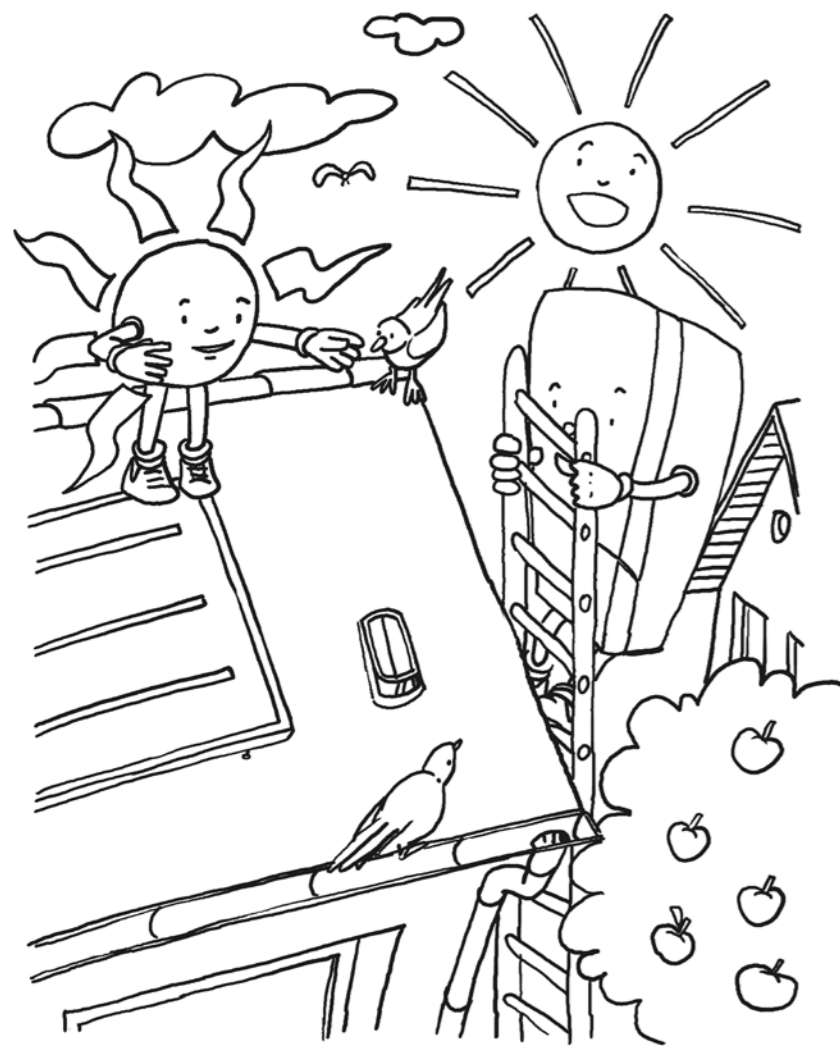


If you need an electrical appliance – buy the most energy efficient one available.

Spot the difference

Can you spot the 10 differences? Find all ten and then colour the pictures!

Answers are on page 27



Mix 'n' match energy facts

Match the beginnings of the sentence to the sentence endings.

Answers are on page 27

Solar energy

Turn the light off

Energy light bulbs can last

Never leave a television

Turn the tapp off

Put foil behind your radiators

Always buy the most

If you are cold

on standby. Switch it off.

is a renewable energy.

when you go out of a room.

up to 12 times longer than traditional light bulbs.

to ,reflect' the heat.

energy efficient electrical appliance.

put on extra clothing rather than turning up the heating.

whilst brushing your teeth.

Energy word search

Save energy

Solar panel

Warmth

Hot water

Bobby Boiler

Renewable

Solar Sam

Heating

Environment

Natural Gas

S	O	L	A	R	P	A	N	E	L	A	B
Y	C	S	D	E	F	G	H	I	J	M	T
K	G	L	A	M	N	O	P	R	Q	A	N
E	R	R	S	G	T	U	E	V	H	S	E
L	W	X	E	Y	L	T	Z	T	A	R	M
B	B	C	D	N	A	A	M	E	F	A	N
A	G	H	I	W	E	R	R	I	K	L	O
W	M	N	T	O	A	E	P	U	Q	O	R
E	R	O	S	W	T	U	V	W	T	S	I
N	H	X	Y	Z	A	B	C	A	E	A	V
E	F	H	E	A	T	I	N	G	S	G	N
R	E	L	I	O	B	Y	B	B	O	B	E

Answers

Spot the difference

1. Only one bird
2. Flowers in window missing
3. Rung of ladder missing
4. The sun has no eyebrows
5. No plants on fence
6. Roof tiles missing
7. Bricks missing
8. Bobby's badge is missing
9. Bird's wing is missing
10. Some of the sun's rays are missing

Mix 'n'match

- ▶ Solar energy is a renewable energy.
- ▶ Turn the light off when you go out of a room.
- ▶ Energy light bulbs can last up to 12 times longer than traditional light bulbs.
- ▶ Never leave a television on standby. Switch it off.
- ▶ Turn the tapp off whilst brushing your teeth.
- ▶ Put foil behind your radiators to ,reflect' the heat.
- ▶ Always buy the most energy efficient electrical appliance.
- ▶ If you are cold put on extra clothing rather than turning up the heating.

Make the Greener Future mobile decoration!

First, cut out the elements of the mobile along the dotted lines using a scissors. Fold each element at the blue lines and glue the reverse sides together. Now affix the elements to one or several wooden decorations using string. Finally, tie the whole thing together and balance it out – finished! Now the mobile is ready to be hung up – best of all on the ceiling of your room.

Tip: Make a colour copy of the page to avoid cutting up the book.

